

# LED Indicating Lamps for Panel Mounting

## Series 8013

PanSiG



www.stahl.de



04788E00

- > For panel mounting
- > With integrated LED
  - High luminance
  - Low heat built-up
  - Prolonged service life
- > Colours:
  - red, yellow, green, blue, white
- > Connection by means of spring clamp terminals or plug-in connection with connection line
  - with terminal compartment
  - without terminal compartment

E4



The LED diode indicating lamps of the Series 8013 signal command modes in load, control and signal circuits by lighting up or going out. They are designed for single-hole fixing D 30 according to EN 50007 in combination with indicating lamp inserts in Series 8602. The version 8013/..1 is a complete, certified explosion-protected device suitable for the installation in enclosure walls or covers of electric devices, switch panels or control desks. The versions 8013/..2 are incomplete, explosion-protected devices suitable for the installation in enclosures of the protection type "Increased safety" according to IEC/EN 60079-7. The LED diode indicating lamps Series 8013/..2. are used in intrinsically safe circuits.

Zone	ATEX / IECEx					
	0	1	2	20	21	22
Ex e / Ex i with connection chamber: For use in		x	x		x	x
Ex e / Ex i without connection chamber: For use in		x	x			

Zone	NEC 505 Class I			NEC 506			Division	NEC 500						
	0	1	2	20	21	22		Class I		Class II		Class III		
Ex e: For use in		x	x				Ex e: For use in		x					
Ex i: For use in	x	x	x				Ex i: For use in	x	x					



**WebCode 8013A**

# LED Indicating Lamps for Panel Mounting

## Series 8013



### Selection Table

Version	Description	Order number	Weight kg	
 <p>LED indicating lamps Series 8013 with connection chamber</p> <p>01712E00</p>	Connection: spring clamp terminal	Ex dem	<b>8013/311-al</b>	0.130
		Ex i	<b>8013/321-al</b>	0.140
	Connection: plug-in connection and connection line 6 m	Ex dem	<b>8013/313-al-6</b>	0.625
		Ex i	<b>8013/323-al-6</b>	0.635
 <p>LED indicating lamps Series 8013 without connection chamber</p> <p>04787E00</p>	Connection: spring clamp terminal	Ex dem	<b>8013/312-al</b>	0.100
		Ex i	<b>8013/322-al</b>	0.110

### Note

The coloured caps red, yellow, green, blue, white are enclosed in the delivery.  
Diode indicating lamp with installed connecting cable on request

### Explosion Protection

Global (IECEX)	
Gas and dust	8013/3.1 IECEx PTB 07.0010 X 8013/3.2 IECEx PTB 07.0012 U 8013/3.3 IECEx PTB 07.0010 X  Ex e 8013/311 Ex dem IIC T6 8013/312 Ex dem IIC 8013/313 Ex dem IIC T6  Ex i 8013/321 Ex dm ia IIC T6 8013/322 Ex dm ia IIC 8013/323 Ex dm ia IIC T6  8013/3.1 Ex tD A21 IP65 T80°C 8013/3.3
Europe (ATEX)	
Gas and dust	8013/3.1 PTB 02 ATEX 2131 X 8013/3.2 PTB 02 ATEX 2130 U  Ex e 8013/311 Ⓜ II 2 G Ex de mb IIC T6 8013/312 Ⓜ II 2 G Ex de mb IIC  Ex i 8013/321 Ⓜ II 2 G Ex d mb ia IIC T6 8013/322 Ⓜ II 2 G Ex d mb ia IIC  8013/3.1 Ⓜ II 2 D Ex tD A21 IP65 T80°C 8013/3.3

### Certificates

Certificates

IECEX, ATEX, India (PESO), Canada (CSA), Kazakhstan (TR), Russia (TR), Ukraine (TR), USA (CSA, UL), Belarus (TR)

### Technical Data

Electrical data	
Rated operational voltage	Ex e 12 (- 10%) ... 254 (+ 6%) V AC / DC Ex i 10.8 ... 28 V DC
Rated operational current	0.014 A at 24 V DC
Frequency	0 ... 60 Hz
Rated operational power	0.6 W
Electrical life	10 <sup>5</sup> operating hours
Safety-specific maximum values (Ex i)	<b>Additional electrical data for intrinsically safe version Type 8013/3.2</b> U <sub>i</sub> ≤ 28 V, I <sub>i</sub> ≤ 150 mA, P <sub>i</sub> = 1 W, inductance L <sub>i</sub> and capacity C <sub>i</sub> negligible
Recommended binary output	STAHL 9175/10-16-11 one duct STAHL 9175/20-16-11 two ducts
Recommended safety barrier	STAHL 9001/01-280-110-101

# LED Indicating Lamps for Panel Mounting

## Series 8013

PanSiG



### Technical Data

#### Ambient conditions

Ambient temperature -30 ... + 55 °C

#### Mechanical data

Degree of protection according to IEC/EN 60529  
 8013/3.1 IP65 (front side IP66)  
 8013/3.2 IP65 (front side IP66, connections IP20)

Material  
 Enclosure Polyamide  
 Calottes Polyamide  
 Insert caps Polyamide

Indicating lamp  
 Lamps LED white  
 Colours red, yellow, green, blue, white, by means of coloured calotte insert caps

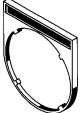



#### Mounting / installation

Cable entry 8013/3.1 M16 x 1,5 (∅ 4 ... 9 mm)  
 8013/3.2

Connection type Connection cross-section:  
 8013/3.1 0.75 ... 1.5 mm<sup>2</sup>  
 8013/3.2 0.50 ... 2.5 mm<sup>2</sup>

E4

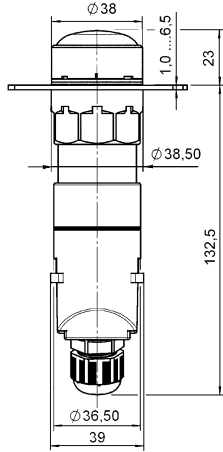
### Accessories and spare parts

Designation	Figure	Description	Art. no.	Weight kg
Additional front label	 05543E00	Label mount, size 1, without symbol label Text: 1 line	155632	0.001
		Label mount, size 2, without symbol label Text: 1 or 2 lines	155687	0.002
		Label mount, size 3, without symbol label Text: 1, 2 or 3 lines	155844	0.002
		for actuators to fit ∅ 30.5 mm holes Symbol labels: without text		0.000
		with text; please specify text: HAND - 0 - AUTO    I - 0 - II OFF - • - ON        0 - I - II 0 - I                    0 - Betrieb - I I - II                    0 - • - I		
Calotte	 05038E00	round, ∅ 30.5 mm, with transparent lens	155759	0.008
Insert cap		red	155842	0.003
		yellow	155834	0.003
		green	155852	0.003
		blue	155860	0.003
		white	155824	0.003
		all colours	155447	0.003
Closing part	 05647E00	for closing of unused mounting holes ∅ 30.5 mm	155329	0.016

# LED Indicating Lamps for Panel Mounting Series 8013

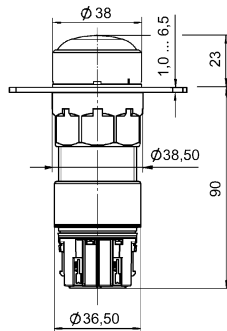


## Dimensional Drawings (All Dimensions in mm) - Subject to Alterations



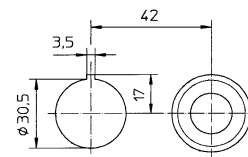
**8013/3.1**  
Indicating lamp with  
terminal compartment

03314E00



**8013/3.2**  
Indicating lamp without  
terminal compartment

04825E00



04488E00

Drilling pattern:  
for aligning several  
devices  
diameter 38 mm, in a panel

We reserve the right to make alterations to the technical data, dimensions, weights, designs and products available without notice. The illustrations cannot be considered binding.