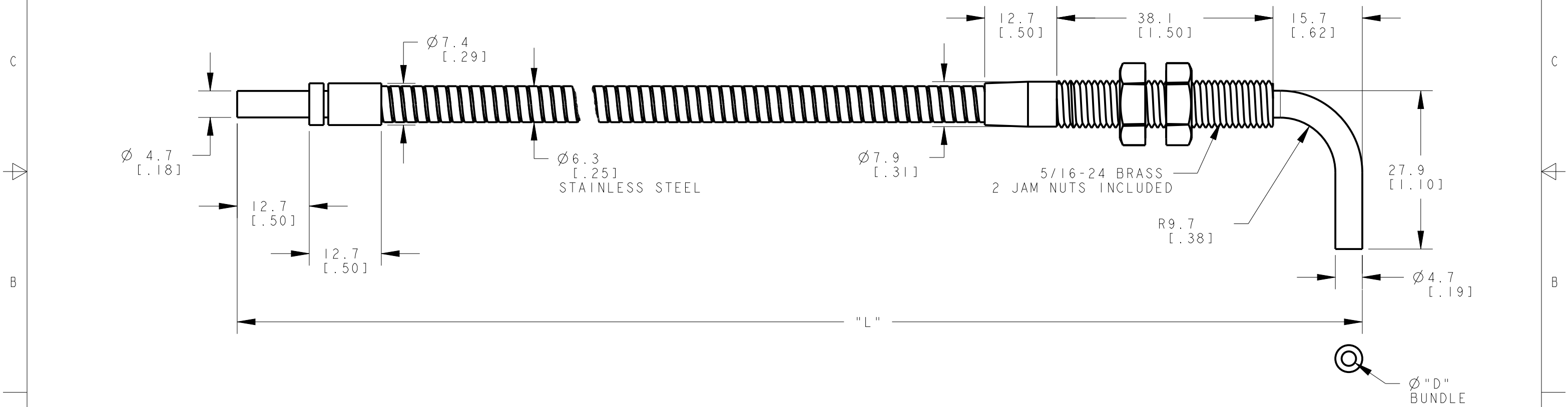


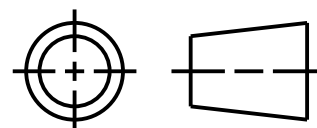
MODEL NO.	"L"	"D"	P/N	MODEL NO.	"L"	"D"	P/N
ITA230S	9144 [360]	3.18 [.125]	20210	ITA13S	914 [36]	1.57 [.062]	20180
ITA24S	1219 [48]	3.18 [.125]	20367	ITA2.5S	152 [6]	3.18 [.125]	20944
ITA25S	1524 [60]	3.18 [.125]	20164	ITA21.5S	457 [18]	3.18 [.125]	20790
ITA26S	1829 [72]	3.18 [.125]	20114	ITA210S	3048 [120]	3.18 [.125]	20689
ITA27S	2134 [84]	3.18 [.125]	20292	ITA212S	3658 [144]	3.18 [.125]	20779
ITA28S	2438 [96]	3.18 [.125]	20594	ITA215S	4572 [180]	3.18 [.125]	20269
ITA29S	2743 [108]	3.18 [.125]	20245	ITA21S	305 [12]	3.18 [.125]	20488
ITA23S	914 [36]	3.18 [.125]	17967	ITA22S	610 [24]	3.18 [.125]	20431



NOTES:  
 1. ALL DIMENSIONS ARE MILLIMETERS [INCHES] UNLESS OTHERWISE NOTED.  
 2. REFER TO "www.bannerengineering.com" FOR ADDITIONAL DATA AND SPECIFICATIONS.

This drawing is the property of BANNER ENGINEERING CORP. Any use or reproduction, in any form, without prior written permission of Banner is prohibited. © 2015 Banner Engineering Corp.

THIRD ANGLE PROJECTION



		<b>BANNER ENGINEERING CORP.</b> <a href="http://www.bannerengineering.com">www.bannerengineering.com</a>	
TITLE			
<b>ITA2 SERIES SS TERMINATED</b>			
SIZE	DRAWING NO.	REV.	
B	<b>161909</b>	<b>A</b>	
SCALE	SHEET		CREO
3:2	1 OF 2		

8	7	6	5	4	3	2	1
MODEL NO.	"L"	"HL"	"AL"	"D"	P/N		
ITA25S	60	.62	1.1	.125	20114		
ITA26S	72	.62	1.1	.125	20114		
ITA27S	84	.62	1.1	.125	20292		
ITA28S	96	.62	1.1	.125	20594		
ITA29S	108	.62	1.1	.125	20245		
ITA23S	36	.62	1.1	.125	17967		
ITA23SM8X1.1	36	8.0 ± .1	1.1	.125	23665		
ITA21.4S	17	.62	1.1	.125	23702		
ITA221S	252	.62	1.1	.125	23773		
ITA222S	264	.62	1.1	.125	23774		
ITA224.5S	294	.62	1.1	.125	23775		
ITA225.5S	306	.62	1.1	.125	23776		
ITA211S	132	.62	1.1	.125	23972		
ITA28SM600	96	.62	1.1	.125	24190		
ITA23SM2X1.1	36	2.0	1.1	.125	24386		
ITA13SM3X1.1	36	3.0	1.1	.062	00000		
ITA23SM3X1.1	36	3.0	1.1	.125	00000		
ITA216.4SM600	197	.62	1.1	.125	00000		
ITA210SM600	120	.62	1.1	.125	24637		
ITA21.8SM.8	21	.62	.8	.125	24896		
ITA230SM600	360	.62	1.1	.125	81899		
ITA.52S	24	.62	1.1	.032	00000		

NOTES:

- 'M600' SUFFIX INDICATES THAT FIBERS POTTED ON ANGLED END WITH EPOXY THAT OPERATES IN MAX. TEMPERATURES OF 600°F.

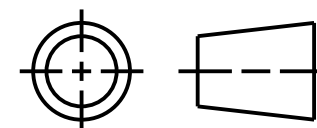
- NOTES:
- ALL DIMENSIONS ARE MILLIMETERS [INCHES] UNLESS OTHERWISE NOTED.
  - REFER TO "www.bannerengineering.com" FOR ADDITIONAL DATA AND SPECIFICATIONS.

This drawing is the property of BANNER ENGINEERING CORP. Any use or reproduction, in any form, without prior written permission of Banner is prohibited.  
© 2015 Banner Engineering Corp.

**BANNER** BANNER ENGINEERING CORP.  
www.bannerengineering.com

TITLE  
**ITA2 SERIES SS TERMINATED**

THIRD ANGLE PROJECTION



SIZE B DRAWING NO. **161909** REV. **A**

SCALE 2:1 SHEET 2 OF 2