



Primary switched single-phase AEGPS SAP-No.: 8000034220

RPL 122.5W-480.65W1 comp. VDE 0570 part 2-17, EN 61558-2-17, EN 60950 class 1

Series 30 Watt regulated



In General:

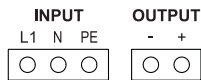
Our intelligent, primary switched power supplies distinguish in high stability and long lifespan. A wide input range best suits them for worldwide application. The power supplies automatically recognize inputs ranging from AC 85V - AC 264V at 30W. They also apply as chargers or DC-DC-converters.

The space saving, compact and robust design supplies a stabilized and load independent output voltage which can be adjusted in a wide range via potentiometer in front. The units can switch in series or parallel and are highly efficient. They are fitted in compact plastic housings which easily snap onto DIN rails. The housings comply with safety class I.

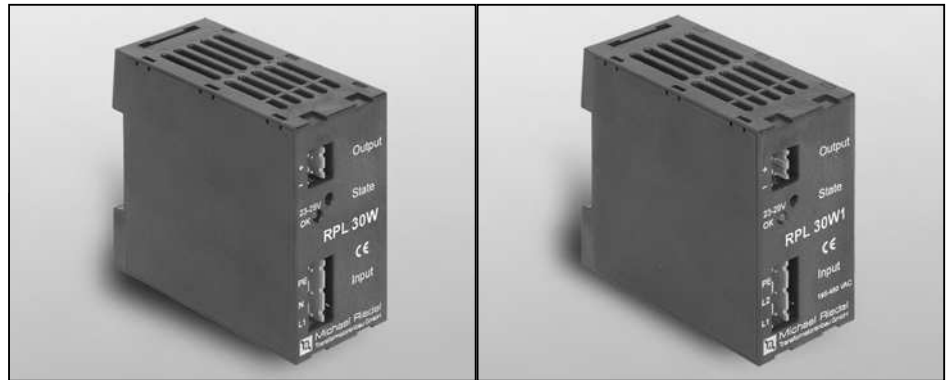
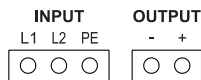
The units feature diverse protection mechanisms such as overcurrent limit, overvoltage limit, short circuit protection, overtemperature protection, inrush current limit etc.

Other voltages, designs or custom makes on request.

Terminal engagement 30W:



Terminal engagement 30W1:



All 30W-units applicable as charger or DC-DC-converters

Technical data for model	RPL 30W			RPL 30W1		
	RPL 122.5W	RPL 241.25W	RPL 480.65W	RPL 122.5W1	RPL 241.25W1	RPL 480.65W1
Type						
Input						
Rated voltage, U1 rated	AC 100V - 240V			AC 220V - 400V		
Voltage range, U1min - U1max	AC 85V - 264V or DC 100V - 375V			AC 195V - 460V or DC 230V - 650V		
Frequency	45-65 Hz					
Recommended external fusing	line circuit breaker C6, B10					
Mains failure bypass time	> 50ms at AC 230V ; > 10ms at AC 115V			> 10ms at AC 230V ; > 20ms at AC 400V		
Output						
Rated voltage U2 rated DC	12V	24V	48V	12V	24V	48V
Voltage range U2min - U2max DC	9-15V	21-29V	45-58V	9-15V	21-29V	45-58V
Rated current I2 (at U2 rated)	2.5A	1.25A	0.65A	2.5A	1.25A	0.65A
Residual ripple	< 20mV RMS					
Series- and parallel operation	yes, series operation up to max. output voltage DC 150V					
Signal data						
Status reports	LED					
Temperature guided charging, option -T	external NTC 10k with B=3977K					
General data						
Efficiency typical	> 80%	> 82%	> 82%	> 80%	> 82%	> 82%
Ambient temperature	-40°C up to +55°C (at -40°C after 10 min heating)					
Measurements approx. (W x H x D)	40 x 80 x 85 mm					
Weight approx.	0,14kg					
Protection against	overload, short circuit, overvoltage, overtemperature					
Protection comp. VDE 0470 / EN 60529	IP 20					
Connections	via connectors					
Regulations	EN 60950;					
EMC-regulations	EN 61000-6-2; EN 61000-6-3; EN 61000-3-2					
Marks	CE					
Article-no.	0500-	0000122.5W	0000241.25W	000480.65W	000122.5W1	00241.25W1 00480.65W1
Options						
Option -S (for example RPL 241.25W-S)	Series diode on output for redundancy- and UPS-systems (decoupling diode)					
Option -T (for example RPL 122.5W-T)	Temperature guided alteration output voltage					

Subject to technical modifications

Standard stock items