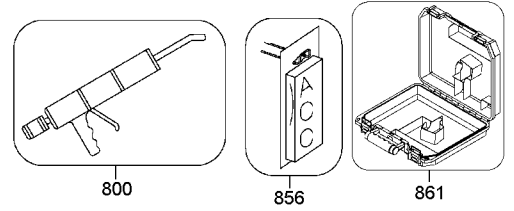
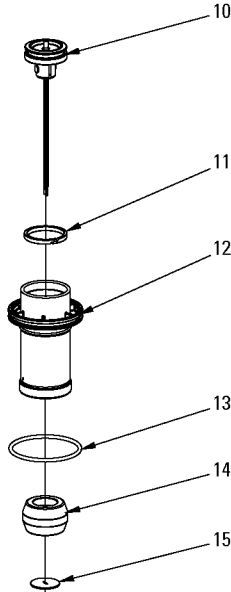
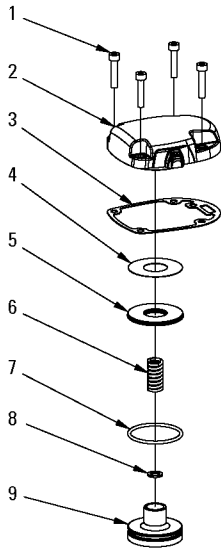


# LHF2025K

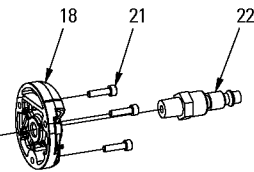
**ENGINEERED FLOORING STAPLER**  
**ENGRAPADORA PARA DUELA DE INGENIERÍA**  
**AGRAFEUSE À PLANCHER PROFESSIONNELLE**



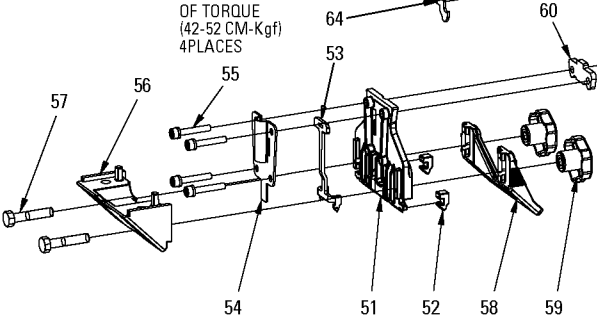
36-45 IN-lbf  
OF TORQUE  
(42-52 CM-Kgf)  
4PLACES



36-45 IN-lbf  
OF TORQUE  
(42-52 CM-Kgf)  
3PLACES



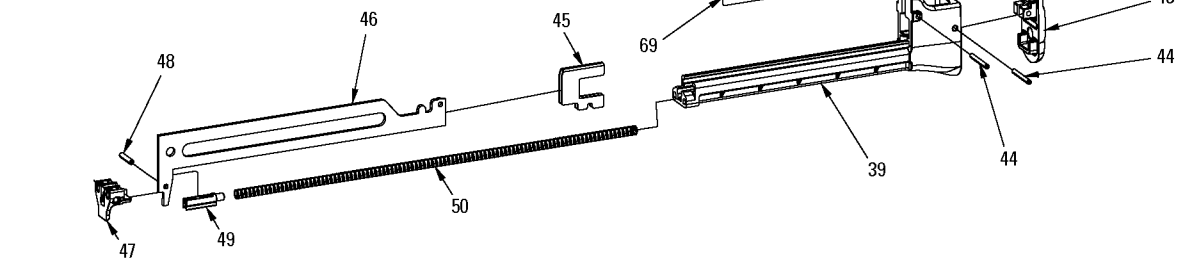
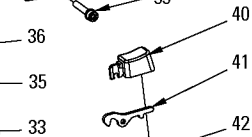
36-45 IN-lbf  
OF TORQUE  
(42-52 CM-Kgf)  
4PLACES



18-25 IN-lbf  
OF TORQUE  
(21-39 CM-Kgf)  
2PLACES



18-25 IN-lbf  
OF TORQUE  
(21-39 CM-Kgf)  
2PLACES



**IP1297-1RD 11/15**

**TO BE USED WITH PARTS LIST IP1297-2 AND OPERATION AND MAINTENANCE MANUAL 189854.**

## Parts List for LHF2025K Type 161200001 and higher

| Item Number | Part Number | Description          | Qty Required |
|-------------|-------------|----------------------|--------------|
| 1           | 182237      | SCREW                | 5            |
| 2           | 188609      | CAP-FRAME            | 1            |
| 3           | 175682      | GASKET-FRAME/CAP     | 1            |
| 4           | 180445      | PLATE                | 1            |
| 5           | 180446      | SEAL                 | 1            |
| 6           | 180447      | SPRING               | 1            |
| 7           | 180448      | O RING               | 1            |
| 8           | 180449      | WASHER FLAT          | 1            |
| 9           | 180450-S    | HEAD VALVE BODY      | 1            |
| 10          | 188617-K    | DRIVER/PISTON ASSY   | 1            |
| 11          | 180457      | RING-PISTON          | 1            |
| 12          | 184389      | CYLINDER             | 1            |
| 13          | 180459      | O-RING-44.7MMX2.4MM  | 1            |
| 14          | 180461      | BUMPER               | 1            |
| 15          | 188610      | DRIVER GUIDE         | 1            |
| 16          | 175656      | FRAME-OVERMOLD       | 1            |
| 17          | 180463      | GASKET-END CAP       | 1            |
| 18          | 180465      | END CAP              | 1            |
| 21          | MSC4070-16  | SCREW-SHCS-M4X0.7X16 | 3            |
| 22          | BTFP72333   | PLUG                 | 1            |
| 23          | 180475      | PIN-SPRING-M3X20MM   | 3            |
| 24          | 174345      | PIN SPRING           | 1            |
| 28          | 182182      | PIN TRIGGER          | 1            |
| 29          | 181956      | TRIGGER ASSY.        | 1            |
| 30          | 182181      | O-RING               | 1            |
| 31          | TVA21       | TRIGGER VALVE KIT    | 1            |
| 32          | 180476      | SPRING-TRIGGER       | 1            |

## Parts List for LHF2025K Type 161200001 and higher

| Item Number | Part Number | Description          | Qty Required |
|-------------|-------------|----------------------|--------------|
| 33          | 175651      | ASSEMBLY-MAGAZINE-S9 | 1            |
| 34          | 121284      | STOP-LATCH           | 1            |
| 35          | MPW4        | WASHER-PWN-M4        | 1            |
| 36          | MSC4070-8   | SCREW-SHCS-M4X0.70X8 | 1            |
| 37          | 121036      | KEY-HEXAGON 3MM      | 1            |
| 38          | 116941      | STOP-CORE            | 1            |
| 39          | 171274      | MAGAZINE-SLIDE       | 1            |
| 40          | 167189      | LATCH-COVER          | 1            |
| 41          | 116933      | LATCH                | 1            |
| 42          | 113579      | SPRING-LATCH         | 1            |
| 43          | 125262      | BUMPER-REAR          | 1            |
| 44          | 159968      | PIN-COILED-HD-M3X25  | 2            |
| 45          | 149736      | PUSHER LHF           | 1            |
| 46          | 165350      | CORE                 | 1            |
| 47          | 188668      | TIP CORE             | 1            |
| 48          | 125357      | PIN-SPIRAL-1/8X5/8 L | 1            |
| 49          | 152272      | SHUTTLE-PUSHER       | 1            |
| 50          | 101069      | SPRING-COMPRESSION   | 1            |
| 51          | 188612      | NOSE-MACHINING       | 1            |
| 52          | 181932      | NOSE INSERT          | 2            |
| 53          | 9R189987    | LOWER CONTACT ARM    | 1            |
| 54          | 188614      | TRIP-CONTACT         | 1            |
| 55          | 121052      | SCREW-SHCS-M4X0.70X2 | 4            |
| 56          | 152118      | ANGLE BLOCK-GUIDE    | 1            |
| 57          | 117398      | SCREW-HHCS-M6X1.0X30 | 2            |
| 58          | 158443      | FOOT-ADJUSTABLE      | 1            |
| 59          | 188684      | KNOB-M6X1.0          | 2            |

## Parts List for LHF2025K Type 161200001 and higher

| Item Number | Part Number | Description         | Qty Required |
|-------------|-------------|---------------------|--------------|
| 60          | 180208      | PLATE-DRIVER        | 1            |
| 61          | 188613      | MAGAZINE BRACKET    | 1            |
| 62          | 180504      | WASHER, FLAT        | 1            |
| 63          | MHE4070-100 | ELASTIC STOP NUT-M4 | 1            |
| 64          | 180639      | TRIP-UPPER          | 1            |
| 65          | 180646      | TRIP SPRING         | 1            |
| 66          | 180641      | GUIDE-LOWER CONTACT | 1            |
| 69          | 158612      | LABEL-WARNING       | 1            |
| 70          | 000000-00   | No Longer Available | 1            |
| 71          | 189882      | PIN,SOLID           | 1            |
| 800         | 100679      | LUBE (1LB.CAN)      | 1            |
| 800         | 100653      | LUBE (2CC)          | 1            |
| 856         | SB97-1GLS   | STAPLE              | 1            |
| 856         | 102341      | BLOCK-INSTALLATION  | 1            |
| 861         | 188685      | BLOW MOLDED CASE    | 1            |